

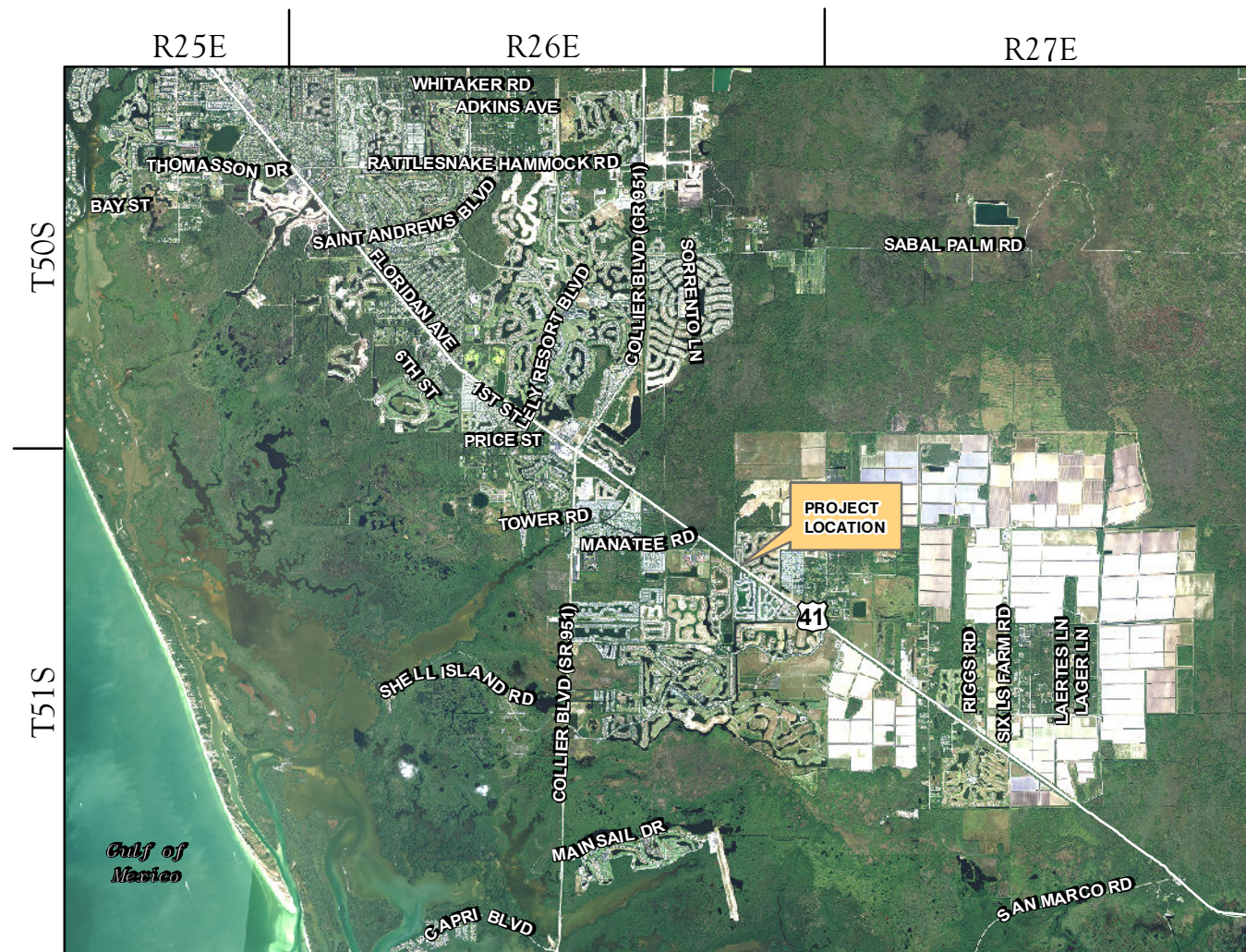
CREATIVE COMMONS

SOUTH FLORIDA WATER MANAGEMENT DISTRICT ENVIRONMENTAL PLANS FOR ENVIRONMENTAL RESOURCE PERMIT

Section 12, Township 51 South, Range 26 East
Collier County

Index of Sheets

Sheet No.	Description
E-1	Cover Sheet
E-2	SFWMD Wetland Map
E-3	Wetland Topographic Map
E-4	FLUCFCS And SFWMD Wetlands Map
E-5	SFWMD Wetland Impact Map
E-6	Conservation Areas Map



Prepared For:
Torres Family Holdings, LLC
3921 Prospect Avenue
Naples, Florida 34104
(904) 762-4454

Prepared By:
 **PASSARELLA**
& ASSOCIATES INC

13620 Metropolis Avenue
Suite 200
Fort Myers, Florida 33912



SCALE: 1" = 100'

REFLECTION LAKES

-U.S. 41-

LEGEND:



SFWMD WETLANDS
(2.40 Ac.±)



SURVEYED WETLAND LINE

WETLAND No. 1
(0.55 Ac.±)

P/L

P/L

IMPERIAL WILDERNESS

FIDDLERS CREEK

WETLAND

NO.	ACREAGE
1	0.55 Ac.±
2	1.85 Ac.±
TOTAL	2.40 Ac.±

-CREATIVE LN-

-PANTHER PASS CIR-

WETLAND No. 2
(1.85 Ac.±)

NOTES:

PROPERTY BOUNDARY AND SURVEYED WETLAND LINES
PER TRASK SURVEYING DRAWING No. 16-24SR-COPY.DWG
DATED JANUARY 26, 2017.

UPLAND/WETLAND LIMITS HAVE NOT BEEN REVIEWED
BY ANY REGULATORY AGENCY AND ARE SUBJECT TO
CHANGE.

J:\2012\126GL2155\2016\KERR\PE-2 SFWMD WETLAND MAP 3-15-17.DWG TAB: 17X11-M APR 05, 2017 - 2:44PM PLOTTED BY: HOLDENH

REVISIONS	DATE

DRAWN BY	T.S.	DATE	3/15/17
DESIGNED BY	B.B.	DATE	3/15/17
REVIEWED BY	B.B.	DATE	3/15/17

13620 Metropolis Avenue
Suite 200
Fort Myers, Florida 33912
Phone (239) 274-0067
Fax (239) 274-0069



CREATIVE COMMONS
SFWMD WETLAND MAP

DRAWING No.	12GGL2155
SHEET No.	E-2



SCALE: 1" = 100'

REFLECTION LAKES

-U.S. 41-

LEGEND:



SFWMD WETLANDS
(2.40 Ac.±)



SURVEYED WETLAND LINE



WETLAND TOPOGRAPHIC POINT
AND ELEVATION (NAVD88)

FIDDLERS CREEK

IMPERIAL WILDERNESS

WETLAND

NO.	ACREAGE
1	0.55 Ac.±
2	1.85 Ac.±
TOTAL	2.40 Ac.±

P/L

P/L

-CREATIVE LN-

-PANTHER PASS CIR-

WETLAND No. 1
(0.55 Ac.±)

WETLAND No. 2
(1.85 Ac.±)

NOTES:

PROPERTY BOUNDARY, SURVEYED WETLAND LINES
PER TRASK SURVEYING DRAWING No.
16-24SR-COPY.DWG DATED JANUARY 26, 2017.

TOPOGRAPHIC INFORMATION PER WALDROP
ENGINEERING DRAWING No. 652010IBASE
(2017-04-03).DWG DATED APRIL 3, 2017.

UPLAND/WETLAND LIMITS HAVE NOT BEEN REVIEWED
BY ANY REGULATORY AGENCY AND ARE SUBJECT TO
CHANGE.

J:\2017\12\26\1255\2016\KERR\3 WETLAND TOPOGRAPHIC MAP 4-3-17 DWG TAB: 17X11-M APR 03, 2017 - 2:44PM PLOTTED BY: HOLDENH

REVISIONS	DATE
Revised topographic elevation	4/3/17

DRAWN BY	DATE
T.S.	3/15/17
DESIGNED BY	DATE
B.B.	3/15/17
REVIEWED BY	DATE
B.B.	3/15/17

13620 Metropolis Avenue
Suite 200
Fort Myers, Florida 33912
Phone (239) 274-0067
Fax (239) 274-0069

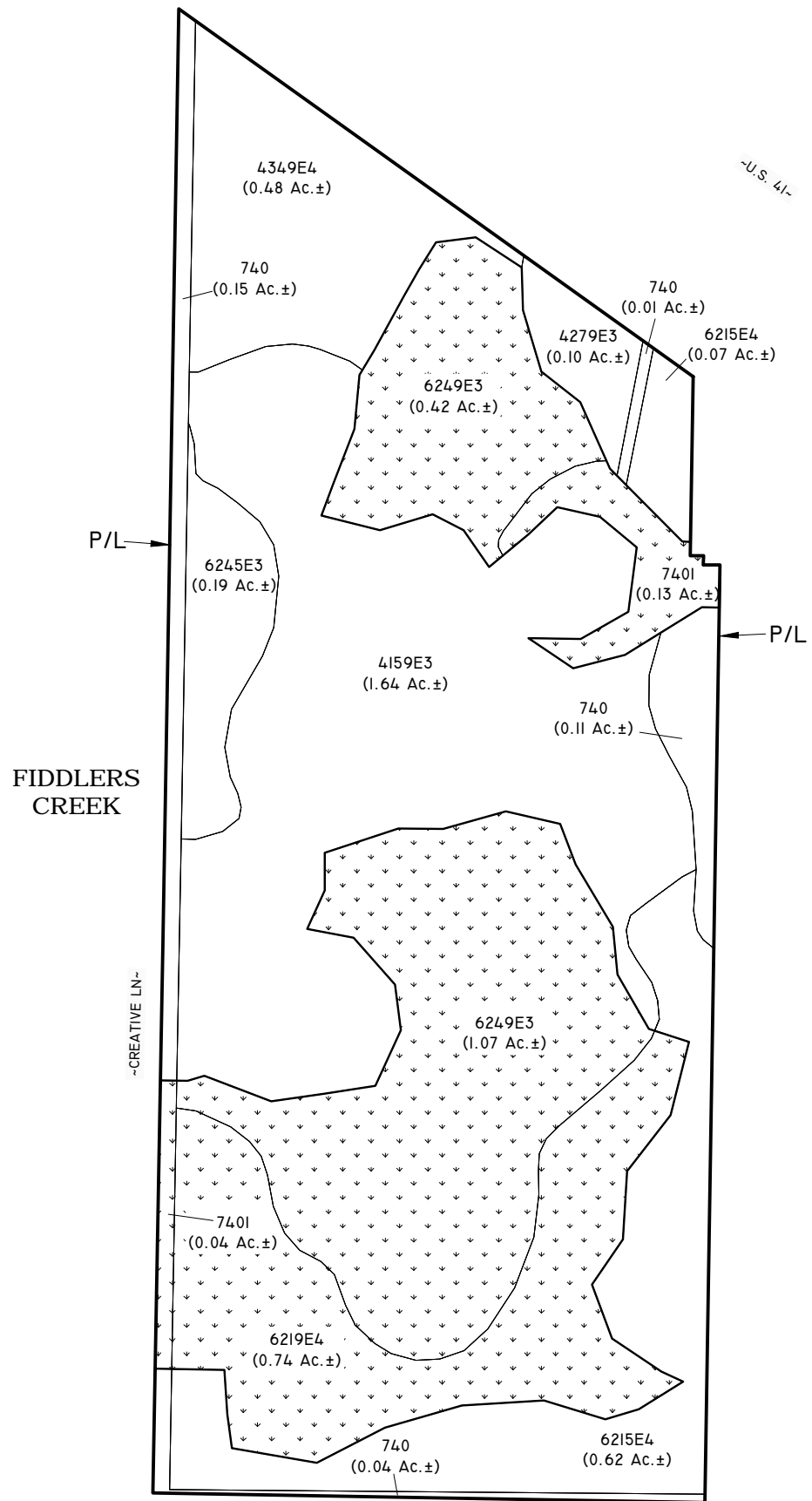


CREATIVE COMMONS
WETLAND TOPOGRAPHIC MAP

DRAWING No.	12GGL2155
SHEET No.	E-3



SCALE: 1" = 100'



REFLECTION LAKES

IMPERIAL WILDERNESS

LEGEND:

SFWMD WETLANDS (2.40 Ac.±)

SURVEYED WETLAND LINE

FLUCFCS CODES	DESCRIPTIONS	ACREAGE	% OF TOTAL
4159 E3	PINE, DISTURBED (50-75% EXOTICS)	1.64 Ac.±	28.2%
4279 E3	LIVE OAK, DISTURBED (50-75% EXOTICS)	0.10 Ac.±	1.7%
4349 E4	HARDWOOD/CONIFER MIXED, DISTURBED (76-100% EXOTICS)	0.48 Ac.±	8.3%
6215 E4	CYPRESS, DISTURBED AND DRAINED (76-100% EXOTICS)	0.69 Ac.±	11.9%
6219 E4	CYPRESS, DISTURBED (76-100% EXOTICS)	0.74 Ac.±	12.7%
6245 E3	CYPRESS/PINE/CABBAGE PALM, DISTURBED AND DRAINED (50-75% EXOTICS)	0.19 Ac.±	3.3%
6249 E3	CYPRESS/PINE/CABBAGE PALM, DISTURBED (50-75% EXOTICS)	1.49 Ac.±	25.6%
740	DISTURBED LAND	0.31 Ac.±	5.3%
7401	DISTURBED LAND, HYDRIC	0.17 Ac.±	2.9%
TOTAL		5.81 Ac.±	100.0%

NOTES:

PROPERTY BOUNDARY AND SURVEYED WETLAND LINES PER TRASK SURVEYING DRAWING No. 16-24SR-COPY.DWG DATED JANUARY 26, 2017.

FLUCFCS LINES ESTIMATED FROM 1"=200' AERIAL PHOTOGRAPHS AND LOCATIONS APPROXIMATED.

FLUCFCS PER FLORIDA LAND USE, COVER AND FORMS CLASSIFICATION SYSTEM (FLUCFCS) (FDOT 1999).

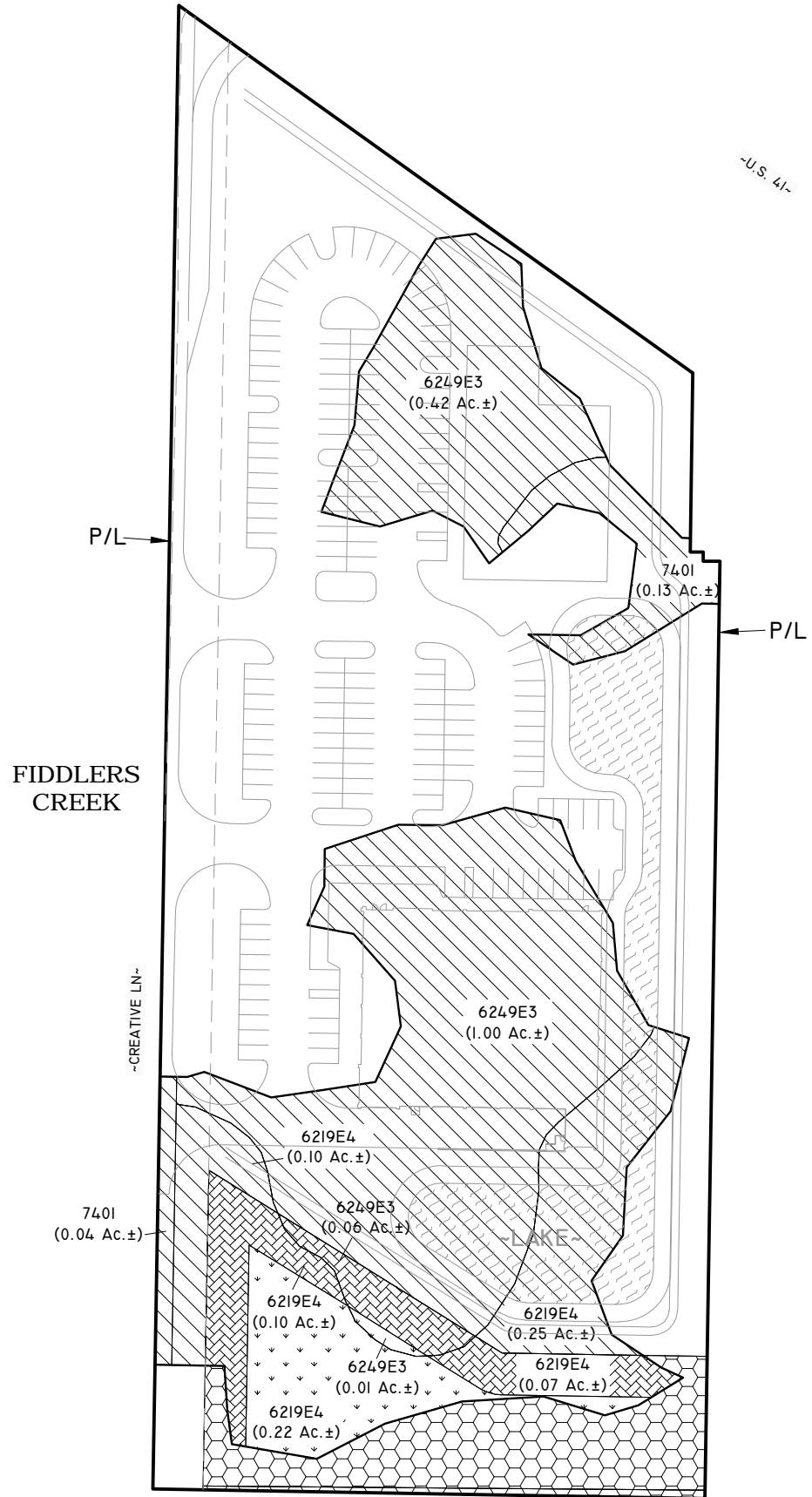
UPLAND/WETLAND LIMITS HAVE NOT BEEN REVIEWED BY ANY REGULATORY AGENCY AND ARE SUBJECT TO CHANGE.

J:\2012\266L2155\2016\KERRIE-4_FLUCFCS AND SFWMD WETLANDS MAP 3-15-17.DWG TAB: 17X11-M APR 03, 2017 - 2:44PM PLOTTED BY: HOLDENH

<table border="1" style="width: 100%; border-collapse: collapse;"> <thead> <tr> <th>REVISIONS</th> <th>DATE</th> </tr> </thead> <tbody> <tr> <td> </td> <td> </td> </tr> <tr> <td> </td> <td> </td> </tr> <tr> <td> </td> <td> </td> </tr> </tbody> </table>	REVISIONS	DATE							<table border="1" style="width: 100%; border-collapse: collapse;"> <tr> <td style="width: 50%;">DRAWN BY D.B., T.S.</td> <td style="width: 50%;">DATE 3/15/17</td> </tr> <tr> <td>DESIGNED BY B.B.</td> <td>DATE 3/15/17</td> </tr> <tr> <td>REVIEWED BY B.B.</td> <td>DATE 3/15/17</td> </tr> </table>	DRAWN BY D.B., T.S.	DATE 3/15/17	DESIGNED BY B.B.	DATE 3/15/17	REVIEWED BY B.B.	DATE 3/15/17	<p>13620 Metropolis Avenue Suite 200 Fort Myers, Florida 33912 Phone (239) 274-0067 Fax (239) 274-0069</p>	<p>PASSARELLA & ASSOCIATES Consulting Biologists</p>	<p>CREATIVE COMMONS FLUCFCS AND SFWMD WETLANDS MAP</p>	<table border="1" style="width: 100%; border-collapse: collapse;"> <tr> <td style="font-size: small;">DRAWING No.</td> <td>12GGL2155</td> </tr> <tr> <td style="font-size: small;">SHEET No.</td> <td>E-4</td> </tr> </table>	DRAWING No.	12GGL2155	SHEET No.	E-4
REVISIONS	DATE																						
DRAWN BY D.B., T.S.	DATE 3/15/17																						
DESIGNED BY B.B.	DATE 3/15/17																						
REVIEWED BY B.B.	DATE 3/15/17																						
DRAWING No.	12GGL2155																						
SHEET No.	E-4																						



SCALE: 1" = 100'



REFLECTION LAKES

IMPERIAL WILDERNESS

FIDDLERS CREEK

LEGEND:

- SFWMD WETLAND PRESERVE (0.23 Ac.±)
- SFWMD WETLAND PRESERVE SECONDARY IMPACT (0.23 Ac.±)
- SFWMD WETLAND IMPACT (1.94 Ac.±)
- SFWMD UPLAND PRESERVE (0.34 Ac.±)
- SURVEYED WETLAND LINE

FLUCFCS CODES	WETLAND PRESERVE	WETLAND PRESERVE SECONDARY IMPACT	WETLAND IMPACT	TOTAL
6219 E4	0.22 Ac.±	0.17 Ac.±	0.35 Ac.±	0.74 Ac.±
6249 E3	0.01 Ac.±	0.06 Ac.±	1.42 Ac.±	1.49 Ac.±
7401	-	-	0.17 Ac.±	0.17 Ac.±
TOTAL	0.23 Ac.±	0.23 Ac.±	1.94 Ac.±	2.40 Ac.±

NOTES:

PROPERTY BOUNDARY AND SURVEYED WETLAND LINES PER TRASK SURVEYING DRAWING No. 16-24SR-COPY.DWG DATED JANUARY 26, 2017.

SITE PLAN PER WALDROP ENGINEERING DRAWING No. 652010IBASE (2017-04-03).DWG DATED APRIL 3, 2017.

FLUCFCS LINES ESTIMATED FROM 1"=200' AERIAL PHOTOGRAPHS AND LOCATIONS APPROXIMATED.

FLUCFCS PER FLORIDA LAND USE, COVER AND FORMS CLASSIFICATION SYSTEM (FLUCFCS) (FDOT 1999).

UPLAND/WETLAND LIMITS HAVE NOT BEEN REVIEWED BY ANY REGULATORY AGENCY AND ARE SUBJECT TO CHANGE.

J:\2012\126GL2155\2016\KERR\PE-5 SFWMD WETLAND IMPACT MAP 4-3-17.DWG TAB: 17X11-M APR 03, 2017 - 2:43PM PLOTTED BY: HOLDBEH

REVISIONS	DATE	DRAWN BY	DATE
Revised Site Plan	4/3/17	T.S.	3/15/17
		DESIGNED BY	DATE
		B.B.	3/15/17
		REVIEWED BY	DATE
		B.B.	3/15/17

13620 Metropolis Avenue
Suite 200
Fort Myers, Florida 33912
Phone (239) 274-0067
Fax (239) 274-0069

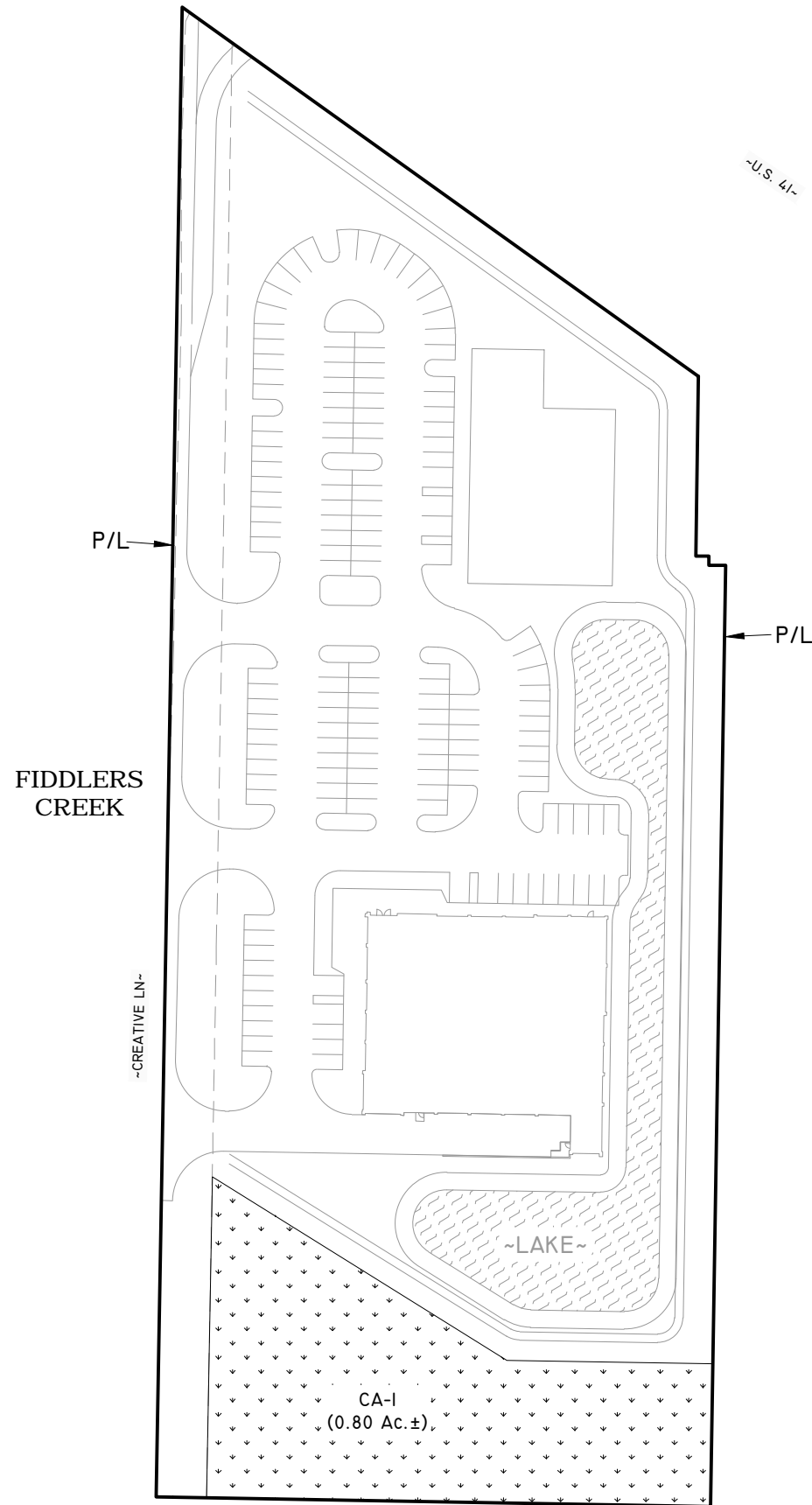


CREATIVE COMMONS
SFWMD WETLAND IMPACT MAP

DRAWING No.	12GGL2155
SHEET No.	E-5



SCALE: 1" = 100'



REFLECTION LAKES

~U.S. 41~

P/L

P/L

FIDDLERS CREEK

IMPERIAL WILDERNESS

~PANTHER PASS CIR~

~CREATIVE LN~

~LAKE~

CA-I
(0.80 Ac.±)

LEGEND:



CONSERVATION AREA
(0.80 Ac.±)

CONSERVATION	
AREA No.	ACREAGE
1	0.80 Ac.±
TOTAL	0.80 Ac.±

NOTES:

PROPERTY BOUNDARY AND SURVEYED WETLAND LINES
PER TRASK SURVEYING DRAWING No. 16-24SR-COPY.DWG
DATED JANUARY 26, 2017.

SITE PLAN PER WALDROP ENGINEERING DRAWING
No. 652010IBASE (2017-04-03).DWG DATED
APRIL 3, 2017.

J:\2017\126GL2155\2016\KERRIE-6 CONSERVATION AREAS MAP 4-3-17.DWG TAB: 17X11-M APR 03, 2017 - 2:45PM PLOTTED BY: HOLDENH

REVISIONS	DATE
Revised Site Plan	4/3/17

DRAWN BY T.S.	DATE 3/15/17
DESIGNED BY B.B.	DATE 3/15/17
REVIEWED BY B.B.	DATE 3/15/17

13620 Metropolis Avenue
Suite 200
Fort Myers, Florida 33912
Phone (239) 274-0067
Fax (239) 274-0069



CREATIVE COMMONS
CONSERVATION AREAS MAP

DRAWING No. 12GGL2155
SHEET No. E-6